

TIFF2XPS
Command-Line Version 2.0
(Requires VISTA +)

User Manual

5 February 2010

Table of Contents

Table of Contents2

Introduction3

Installation3

How to Use.....3

Examples of the command-line.....5

Command File6

Examples of the Command-Line.....6

Demo Version.....7

Other Versions.....7

Support7

License Agreement, Licensing Terms.....8

Introduction

The TIFF2XPS Command-Line program converts TIFF (single- or multipage) files to XPS format. The resulting XPS file(s) are fully compatible with Microsoft specifications. It is an executable which can advantageously be called in multiple (*.cmd, shell, etc) ways. It is written in C#. It requires NET Framework 3.0 (VISTA +). Because the resulting file is a raster file, the XPS file is not text-searchable.

The new version (released February 2010) features the following improvements:

1. Multi-threading allows multiple simultaneous executions
2. Even faster execution (since all processing is done in memory, the execution is extremely fast)

Installation

Unzip the downloaded T2X.zip, you will see 2 files:

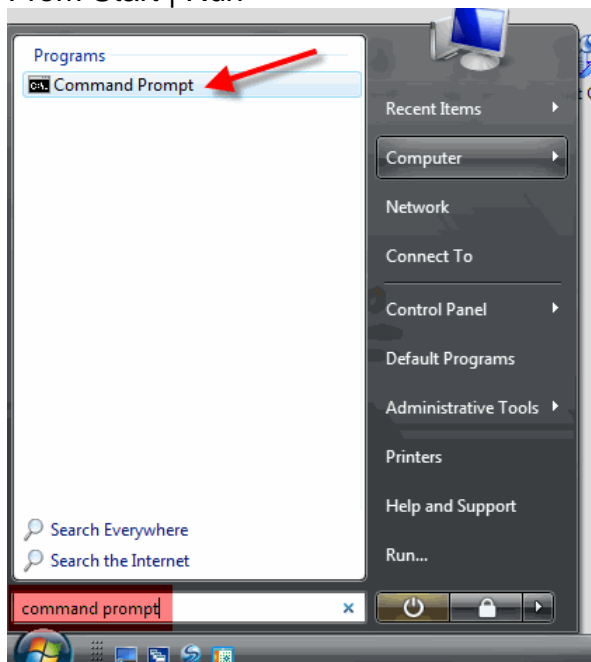
T2X.PDF (this file) , T2X.EXE .

Please place the T2X.EXE file in the (local) folder of your choice. The path must be “full trusted” ; executables or binaries can be run. It is recommended that you place it in the Windows\System32 (or Windows\System) folder where you can access it via the command line without having to type in a long path name.

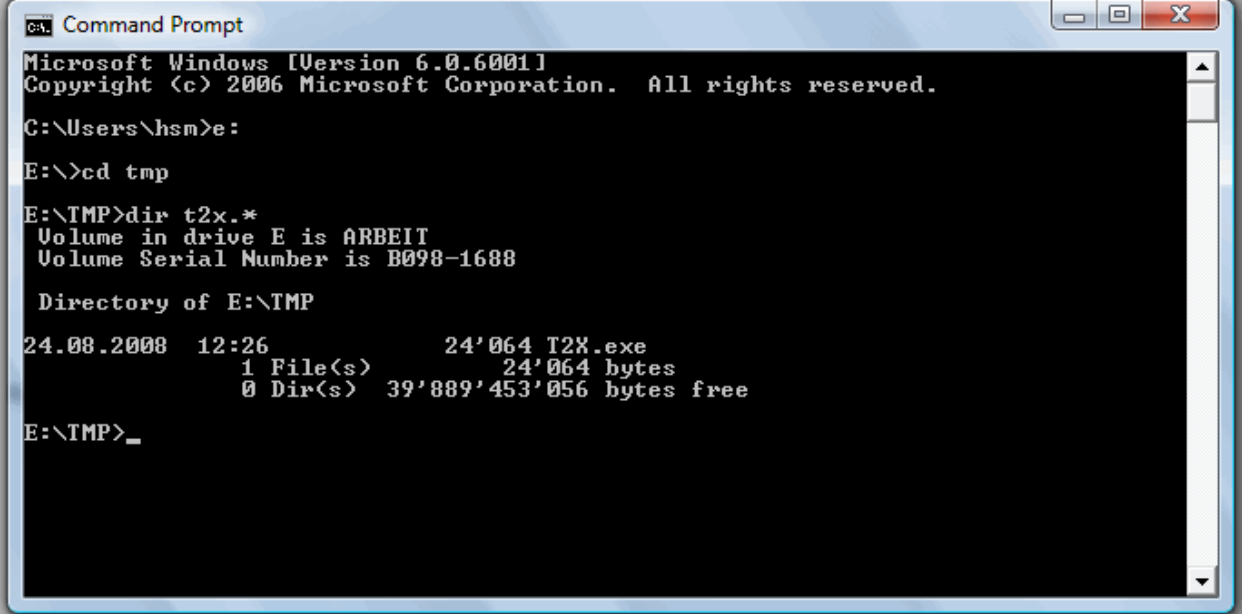
How to Use

Simply call the T2X.EXE with an argument/parameter string in one of the following ways:

- From Start | Run



Open a “command prompt” window and use a full path or navigate to the directory where you placed T2X.EXE



```
Microsoft Windows [Version 6.0.6001]
Copyright (c) 2006 Microsoft Corporation. All rights reserved.

C:\Users\hsm>e:
E:\>cd tmp
E:\TMP>dir t2x.*
Volume in drive E is ARBEIT
Volume Serial Number is B098-1688

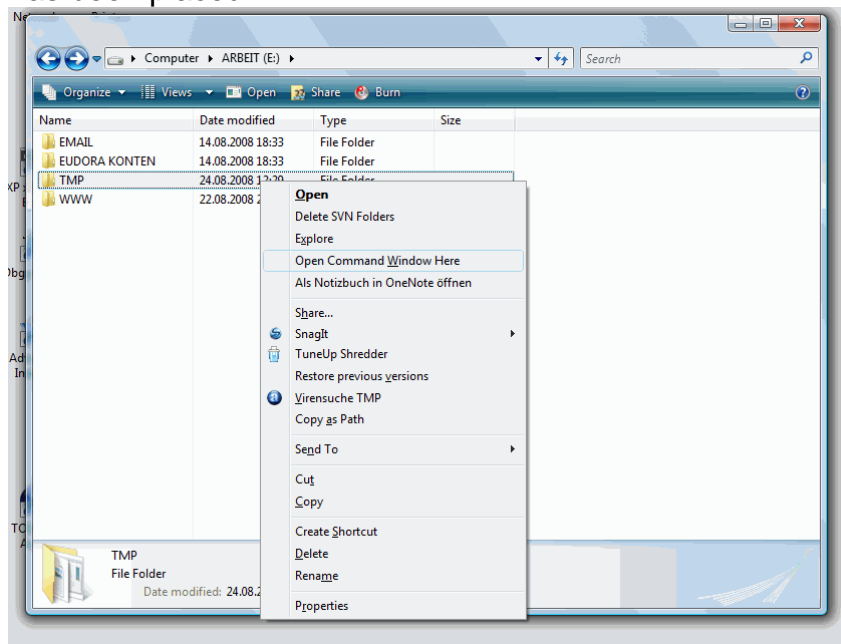
Directory of E:\TMP

24.08.2008  12:26                24'064 T2X.exe
             1 File(s)                24'064 bytes
             0 Dir(s)  39'889'453'056 bytes free

E:\TMP>_
```

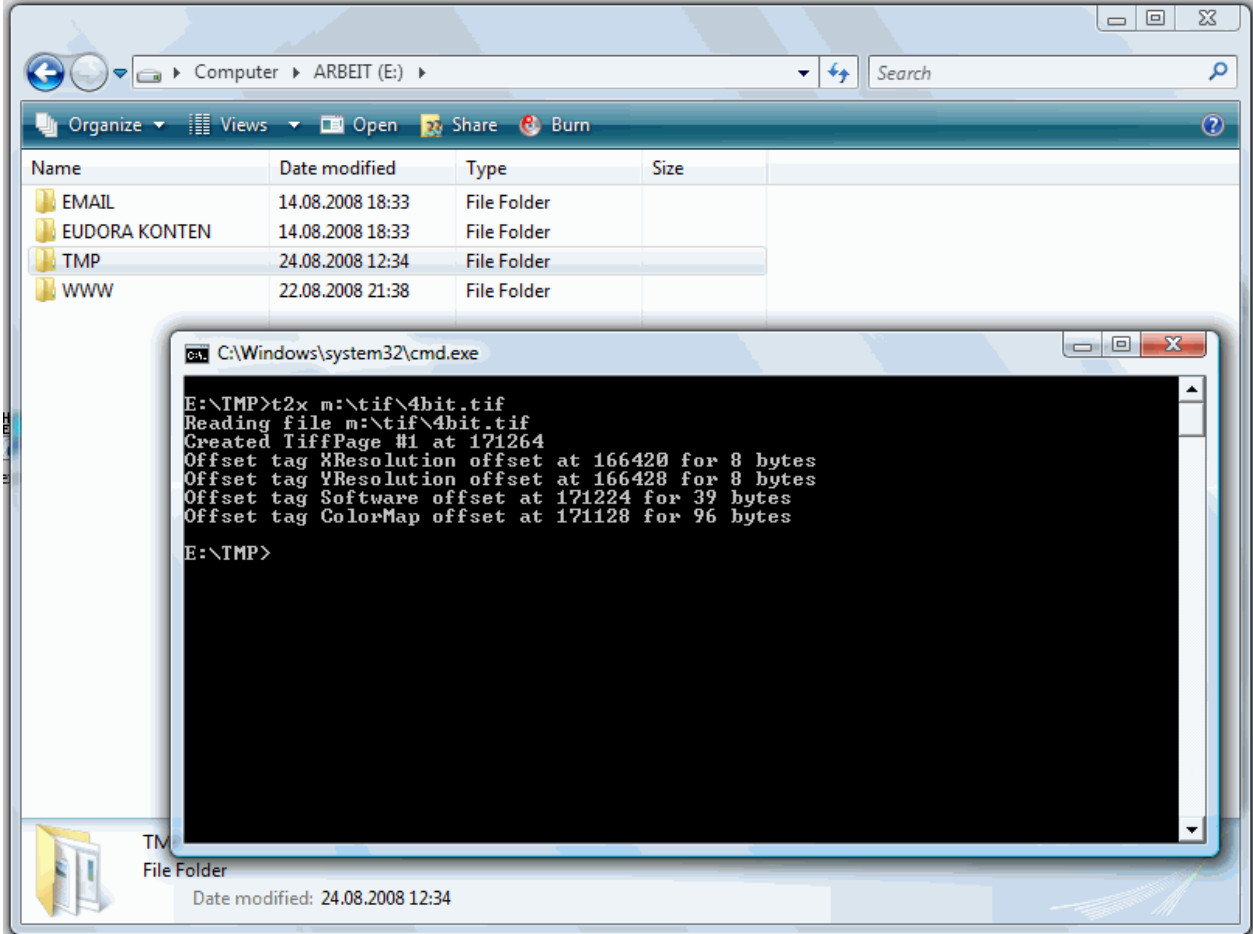
- From the desktop “right click menu”

Just hold down the shift key and right-click on the directory where T2X.EXE has been placed



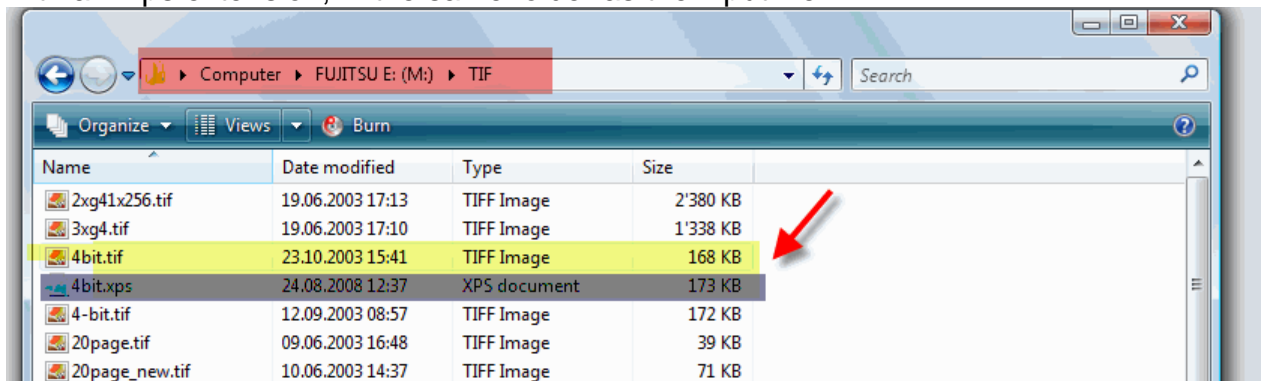
In the “command” window (also called DOS or Shell) write the command. The command consists of the name of the program (T2X) followed by one or several input TIFF-file-

path names. The maximum number of input TIFF files that can be specified in the command-line string is 1022.



The syntax of the command string is as follows:

- In the argument string, the file names must be separated by a single space.
- If any of the file names includes a space, the file names must be encapsulated in quotes. It is suggested that you always use quotes.
- An XPS file will be created saved with the name of the first listed input file, but with an .xps extension, in the same folder as the input file.



Examples of the command-line

(The samples assume that the T2X.EXE is located in the E:\TMP folder)

Sample 1:

The TIFF (single- or multipage) file is saved as c:\dir\filex.xps.

```
E:\tmp\T2X.EXE c:\dir\filex.tif
```

Sample 2:

The three listed TIFF files are saved as: c:\dir\file1.xps c:\dir\file2.xps
c:\dir\file3.xps

```
e:\tmp\T2X.EXE c:\dir\file1.tif c:\dir\file2.tif c:\dir\file3.tif
```

Command File

Generally, the argument is a part of the Run Command, as illustrated in the samples above. In Windows VISTA you can also employ a Command file (.CMD file). The CMD file can list many calls and each line in the CMD file is called in turn. The CMD file can also use the 'pause' keyword that allows you to pause the execution so that the process log can be reviewed before the process is finished. It is suggested that you use the CMD file for testing. The CMD file is also recommended if you wish to append many TIFF files into one XPS file (which may exceed the maximum number of characters allowed in a DOS command string).

To create a CMD file, use any text editor, for example Notepad, and save the plain text file with a .cmd extension. To run the CMD file, simply double-click on the CMD file (or use the Run or Shell functions).

Examples of the Command-Line

Sample 1:

This CMD file executes one conversion. If the path name has a space, it must be encapsulated in quotes.

```
SET CMD_LINE="c:\somedir\T2X.EXE"  
%cmd_line% c:\somedir\inputfile.tif  
pause
```

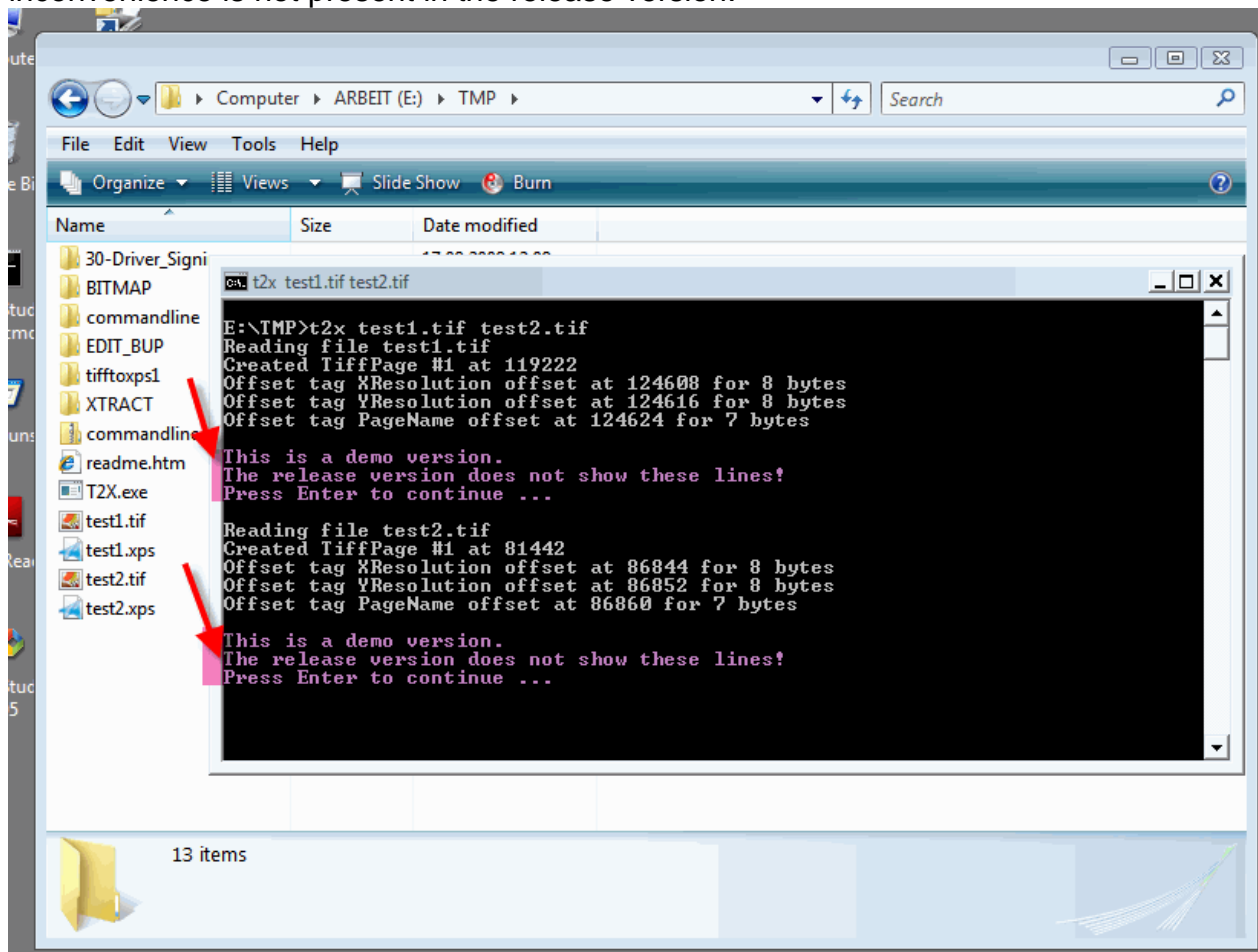
Sample 2:

This CMD file executes one conversion, appending several files. This sample uses the 'pause' option (recommended for testing).

```
SET CMD_LINE="c:\somedir\T2X.EXE"  
%cmd_line% c:\somedir\inputfile1.tif c:\somedir\inputfile2.tif  
c:\somedir\inputfile3.tif  
pause
```

Demo Version

After each page the user is required to acknowledge that he is using a demo. This inconvenience is not present in the release version.



Other Versions

Following version of TIFF2XPS will soon be available:

- User-Interactive (GUI)

For more information, please go to

<http://www.expert-tools.com>.

Support

Please contact support@hsm.ch.

License Agreement, Licensing Terms

HSM Informatik AG (“LICENSOR”)

IMPORTANT - READ CAREFULLY: This License Agreement is a legal agreement between you and the supplier of the T2XPS product(s) which may include associated software components, media, printed materials, and "online" or electronic documentation ("PRODUCT"). By installing, copying, or otherwise using the PRODUCT, you agree to be bound by the terms of this License Agreement. If you do not accept the terms of this License Agreement, do not install or use the PRODUCT.

The PRODUCT is protected by copyright laws and international copyright treaties, as well as other intellectual property laws and treaties. The PRODUCT is licensed, not sold.

1. GRANT OF LICENCE.

The PRODUCT is licensed as follows: LICENSOR grants you the right to install and use a single copy of the PRODUCT on one computer (desktop or workstation) in the case of a single-user license, or on the specific number of computers (desktops or workstations) licensed in a multi-user license, or on a server in the case of a server license. The PRODUCT must not be used for development of an application and must not be distributed with an application, except as specifically agreed on in writing, and then only to the agreed number of end-users. The PRODUCT must only be used by the licensee; it must not be distributed to other companies or persons, without a prior written agreement by the LICENSOR.

Backup Copies: You may also make copies of the PRODUCT as may be necessary for backup and archival purposes.

2. DESCRIPTION OF OTHER RIGHTS AND LIMITATIONS.

Maintenance of Copyright Notices: You must not remove or alter any copyright notices on all copies of the PRODUCT.

- **Prohibition on Reverse Engineering, De-compilation, and Disassembly:** You may not reverse engineer, de-compile, or disassemble the SOFTWARE PRODUCT.
- **Rental:** You may not rent, lease, or lend the PRODUCT.
- **Transfer:** You may not transfer all of your rights under this License Agreement without the prior agreement of the LICENSOR in writing.
- **Compliance with Applicable Laws:** You must comply with all applicable laws regarding use of the PRODUCT.

3. TERMINATION.

Without prejudice to any other rights, LICENSOR may terminate this License Agreement if you fail to comply with the terms and conditions of this License Agreement. In such event, you must destroy all copies of the PRODUCT.

4. COPYRIGHT.

All title, including but not limited to copyrights, in and to the PRODUCT and any copies thereof are owned by HSM Informatik AG. All rights, not expressly granted, are reserved by copyright holder.

(c) HSM Informatik AG, 2010.

5. NO WARRANTIES.

LICENSOR or its agents, supplier, and distributors expressly disclaim any warranty for the PRODUCT. THE PRODUCT AND ANY RELATED DOCUMENTATION IS PROVIDED "AS IS" WITHOUT WARRANTY OF ANY KIND, EITHER EXPRESS OR IMPLIED, INCLUDING, WITHOUT LIMITATION, THE IMPLIED WARRANTIES OR MERCHANTABILITY, FITNESS FOR A PARTICULAR PURPOSE, OR NONINFRINGEMENT. THE ENTIRE RISK ARISING OUT OF USE OR PERFORMANCE OF THE PRODUCT REMAINS WITH THE LICENSEE.

6. LIMITATION OF LIABILITY.

To the maximum extent permitted by applicable law, in no event shall LICENSOR or its suppliers, agents, resellers, be liable for any special, incidental, indirect, or consequential damages whatsoever (including, without limitation, damages for loss of business profits, business interruption, loss of business information, or any other pecuniary loss) arising out of the use of or inability to use the PRODUCT or the provision of or failure to provide Support Services, even if LICENSOR or its suppliers, agents, resellers have been advised of the possibility of such damages.

7. Licensee agrees that the trial version was fully tested prior to purchase of the PRODUCT and it is clearly understood that the license fee is NOT REFUNDABLE.

8. The place of jurisdiction is Lucerne, Switzerland.